

HSD Campus

The New Innovation Centre
of the Dutch Security Cluster



HSD

The Hague Security Delta

HSD Campus

The HSD Campus is the national innovation centre of the Dutch security cluster, with living labs, education and training facilities, flexible office space and meeting rooms.

Businesses, government and knowledge institutes from across the country collaborate to harvest knowledge, and develop products and services that contribute to a safer and more secure world. At the HSD Campus, they have access to flexible office space, training facilities, meeting rooms and state-of-the-art labs for serious gaming, real-time intelligence and (cyber) incident experiences.

At the HSD Campus, the latest developments in the field of security are demonstrated, and wide-ranging information about the security cluster can be obtained.

The HSD Campus will serve as an inspiring place to meet entrepreneurs, students and professionals in the security cluster. It will be home to the educational programs of the new Cyber Security Academy (CSA) and European Network for Cyber Security (ENCS) and it will be the place where SME Connect will provide security entrepreneurs with advice. As of January 2014, the 'The Hague Security Delta Foundation' will be moving its offices to the HSD Campus.

The grand opening of the HSD Campus will take place on February 13th, 2014 at the Beatrixpark in The Hague.

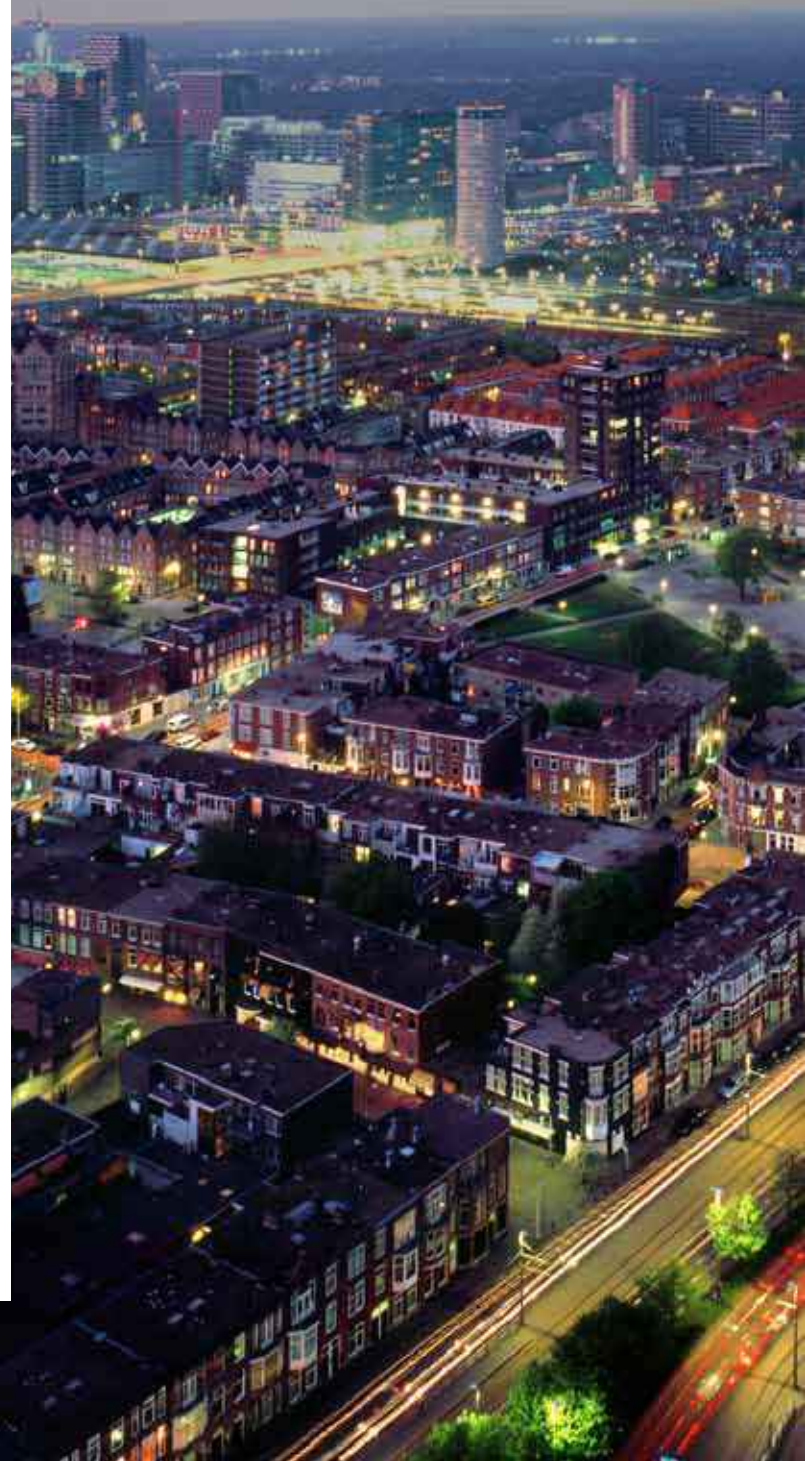


National security innovation centre of 1.400 m²

- Serious Gaming Lab
- Real Time Intelligence Lab
- Experience Lab
- Partner Labs
(forensic, cyber, critical infrastructure)
- Training and educational facilities
- Workspaces and flexible office spaces
- Boardroom
- Information and demonstration area
- Meeting rooms with capacity for 2 – 40 persons
- Wi-Fi
- Coffee corner
- Restaurant
- Modern reception room for meetings

The Hague

Welcome to The Hague, the international city of Peace, Justice and Security. The Hague opens its doors for companies, entrepreneurs and professionals. Our city caters to people that enjoy living in green surroundings with many parks. To people that enjoy a large variety of culture and shopping opportunities. To people that require space to innovate and prosper. The coastal metropolis does not only offer an excellent quality of life but also the right business climate.



An aerial night view of The Hague, Netherlands, showing a dense urban landscape with illuminated buildings and streets. A large, semi-transparent circular graphic with a dashed outer ring and a solid inner ring is centered over the city. In the bottom right corner, there is a stylized white graphic of a circuit board or network diagram with several circular nodes connected by lines.

International City of Peace, Justice and Security

- Third largest city in the Netherlands, and second UN city in the world
- Official seat of the Crown and Government and home to 500.000 citizens, the Ministry of Security and Justice, NCTV (National Coordinator for Security and Counterterrorism), the NFI and NCSC (National Cyber Security Centre)
- Cosmopolitan city with multinationals, 160 international organizations (including Europol and the European Cyber Crime Centre), a large international community and internationally oriented labour force
- Excellent conference facilities. The Hague will host the global Nuclear Security Summit, ASIS 2014 and the World Cup Hockey
- Easily accessible by public transport, highways, regional and international airports (within 50 km)
- One of the greenest cities in Europe, along 11 kilometres of sandy beaches
- Excellent Universities in the city and in the region
- Large variety of cultural-, sport-, restaurant- and shopping amenities

The Hague Security Delta



e Hague Security Delta (HSD) is the largest security cluster in Europe. Here, companies, governments, and knowledge institutions work together on innovations and knowledge related to cyber security, national and urban security, protection of critical infrastructure, and forensics.

ey have a shared ambition: a secure world and economic development.

The Hague lies in the heart of this all. This region alone houses 300 security organizations, responsible for a turnover of 1,5 billion Euros and employing over 10.000 people.

HSD has strong ties with other innovative and influential regions, both in The Netherlands and abroad, amongst which Twente Safety & Security, Brainport Eindhoven and the European institutions in Brussels.

Already more than 175 partners, including:

SIEMENS

 **Trigion**

TNO innovation
for life

 Nederlandse Enterprise
Agentschap

Twynstra Gudde
ADVISOREN EN MANAGERS


Gemeente Den Haag


Capgemini

 **FOX IT**
FOR A BOLD SECURITY FUTURE


The Hague
Centre for
Strategic
Studies

 Ministerie van Veiligheid en Justitie


KLM

THALES

 **WESTHOLLAND**
REGIONAL INVESTMENT AGENCY

Deloitte.


syn
tens
INNOVATIE
CENTRUM

DE HAAGSE
HOOGESCHOOL

Beatrixpark

The HSD Campus is located in the 'Beatrixpark' business complex in the Hague, in a district with excellent office space facilities, beautiful apartments, a four-star hotel and restaurants.

Architecture

The Beatrixpark consists of an office complex housing five separate buildings, in a vibrant environment. The architecture is characterized by uniformity in colour (silver), material and timeless design.

Campus Feeling

The HSD campus is located in the HeadQuarter building on the 7th and 8th floor (approx. 1.400 square meters). A welcoming entrance and a pleasant atmosphere contribute to a campus feeling. The spaces are modern, bright, vibrant and suitable for (temporary) project teams and small companies.

Offices and Parking

In addition to the flexible work spaces and offices for rent at the HSD campus there still is plenty of room for companies that wish to establish in the heart of the Dutch security cluster. Tenants and visitors have access to the company restaurant on the first floor and the parking garage under and adjacent to the building.



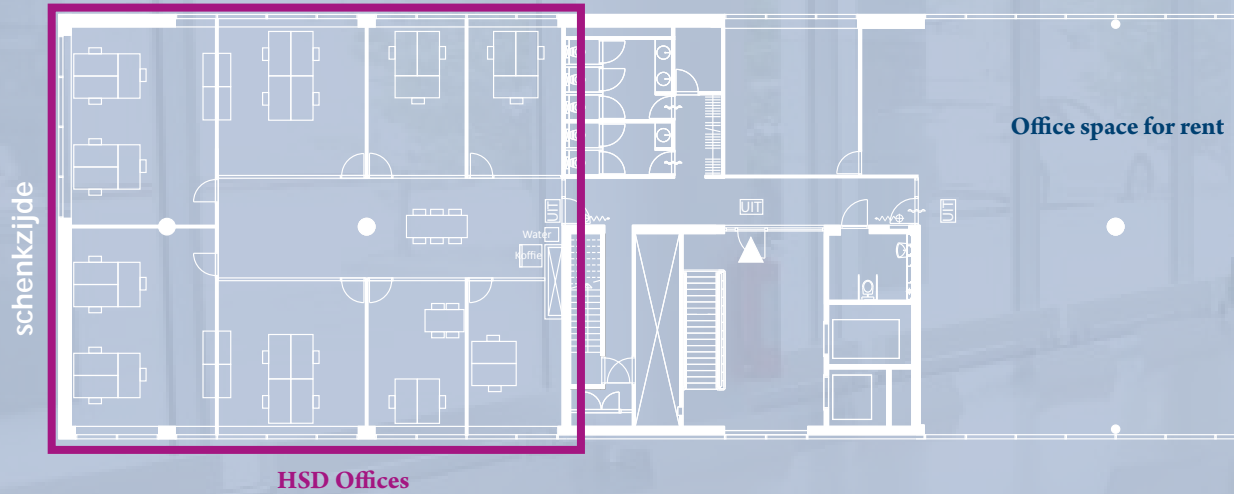
Beatrixpark summarized:

- High-quality office space, timeless design
- Access by Randstadrail and two NS train stations within walking distance
- Right next to the Utrechtsebaan (Highway A12)
- Professional appearance in a vibrant environment
- Restaurants and four-star hotel
- Parking under and adjacent to the building
- New, modern company restaurant
- Coffee corner in the entrance hall
- Opportunities for expansion

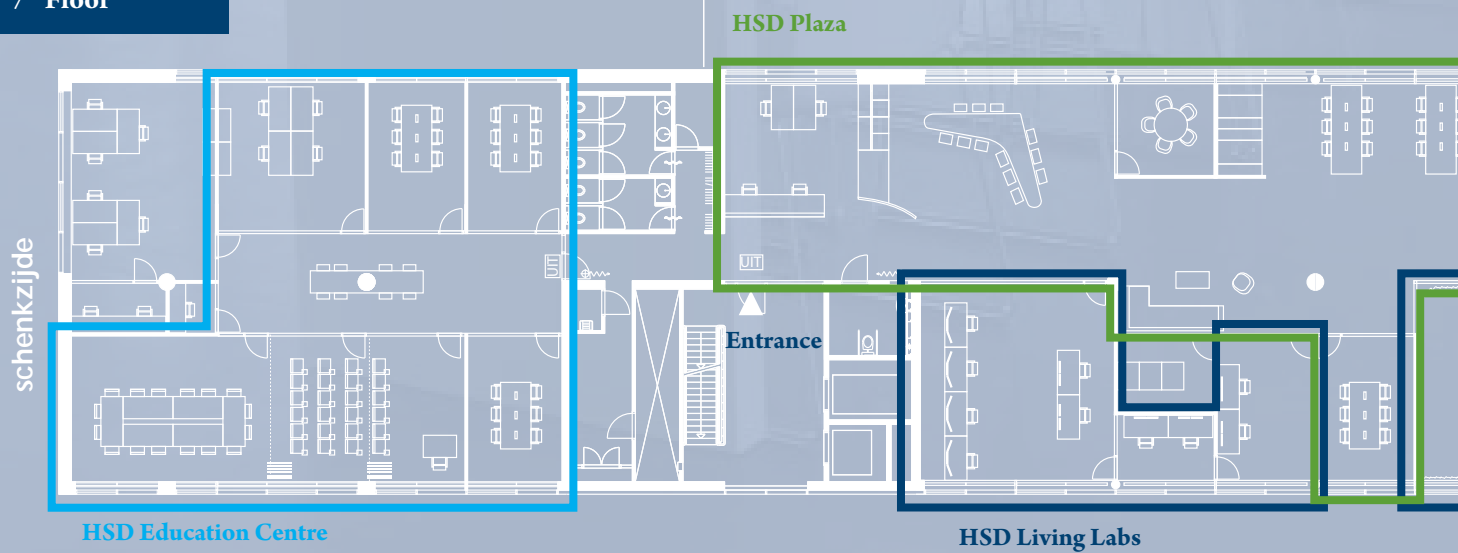


Floor plan HSD Campus

8th Floor



7th Floor



de HSD Campus consists of four areas, each with a design that perfectly fits its purpose:

HSD Plaza

HSD Plaza is the inspiring meeting place for entrepreneurs and other professionals in the security cluster, where they can view, present and discuss the latest developments in security over a good cup of coffee.

HSD Living Labs

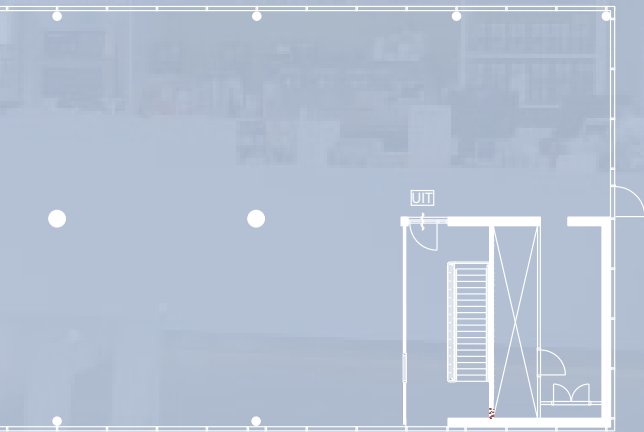
HSD Living Labs are high-tech facilities that can be used by companies, knowledge institutions and governments for joint innovation programs. In the future these labs can also be used for real-time crisis situations.

HSD Education Centre

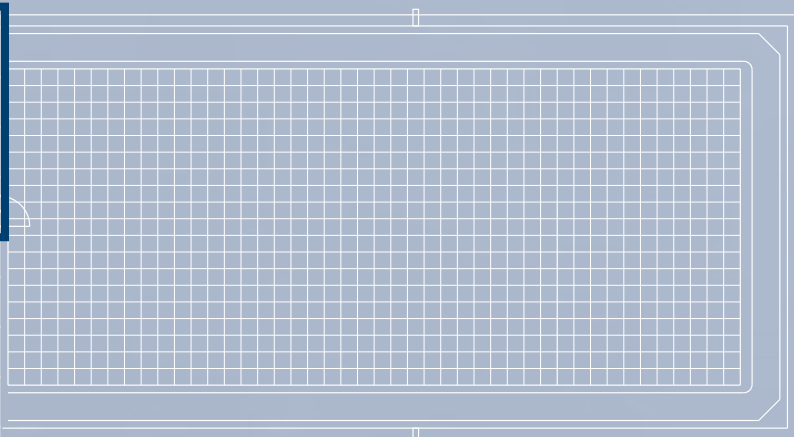
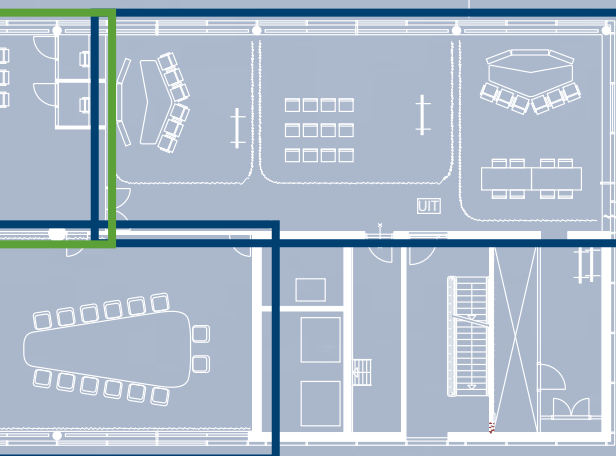
HSD Education Centre is a flexible space equipped with all necessary amenities for education, training, brain-storming sessions, meetings and presentations to both large and small groups. The 'Cyber Security Academy' and the European Network for Cyber Security will provide their educational programs at the HSD Campus.

HSD Offices

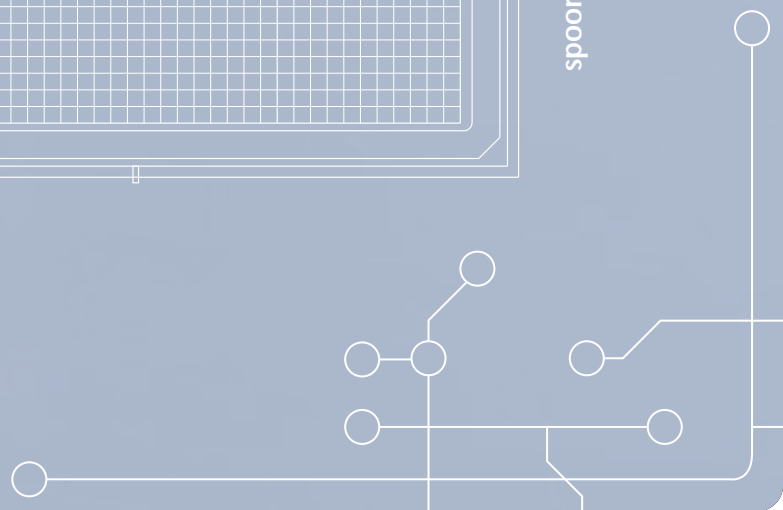
At the HSD Campus (temporary) office space and project rooms are available for rent to businesses, governments and knowledge institutes in the security cluster. These offices can be used by e.g. project teams or small and medium sized companies in the security cluster.



HSD Living Labs



spoorzijde



HSD Plaza

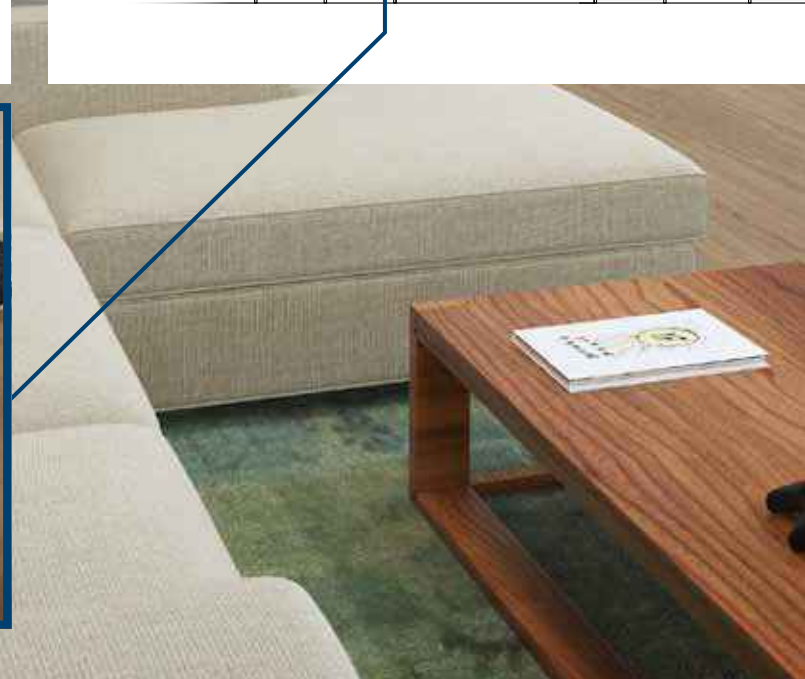
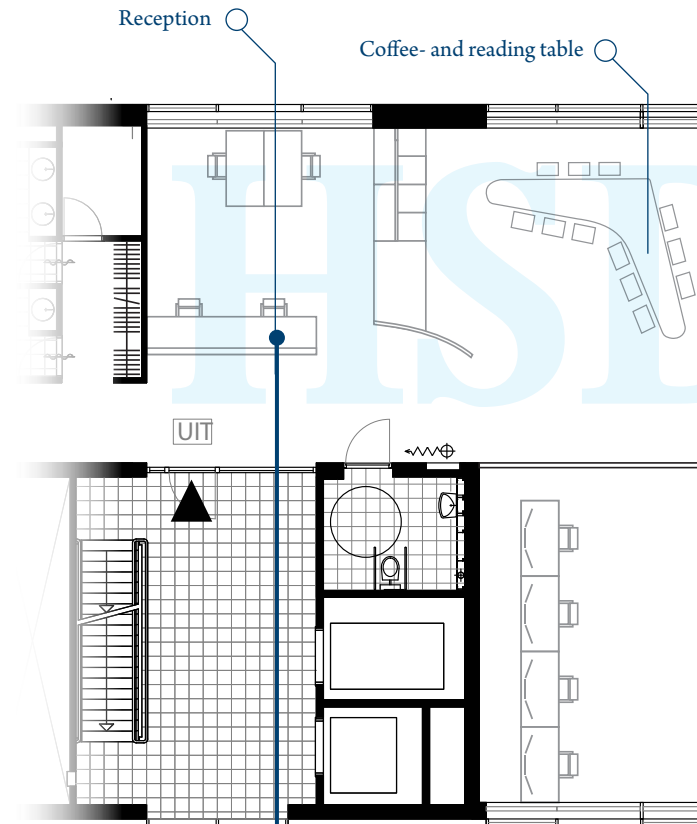
HSD Plaza is the inspiring meeting place for entrepreneurs and professionals in the security cluster, where they can discuss, experience and learn about the latest developments in the field of security. There is a large reading table with information about the security cluster and good coffee is within reach.

Reception, Seminars and Meetings

Here you will find the reception, a cloakroom with lockers, general seating area, restrooms, meeting rooms, and quiet rooms. The area is suited for many purposes, including seminars or product presentations. The network events of The Hague Security Delta are also held here.

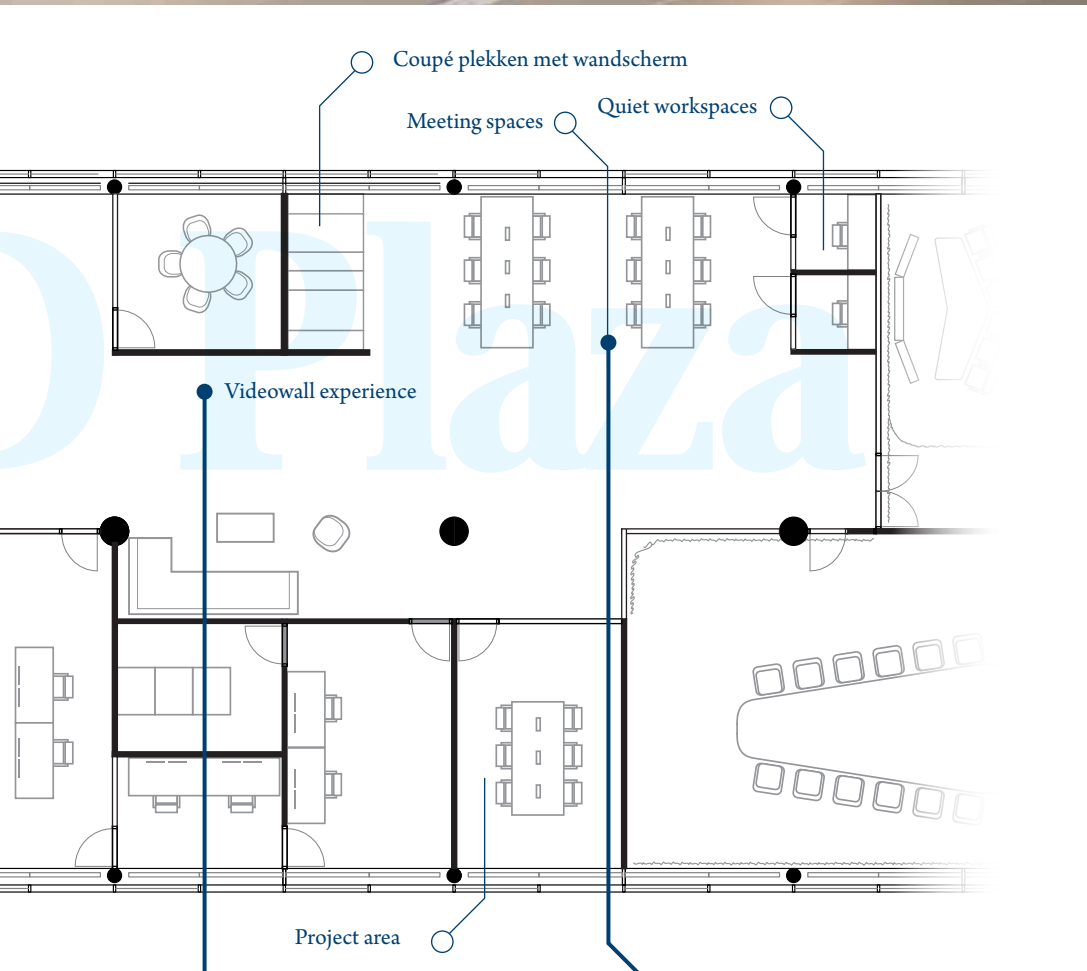
Catering

Visitors of the HSD Campus can use the company restaurant on the first floor.



Details

Reception and workspaces	28 m ²
General area	123 m ²
Work and meeting rooms	97 m ²

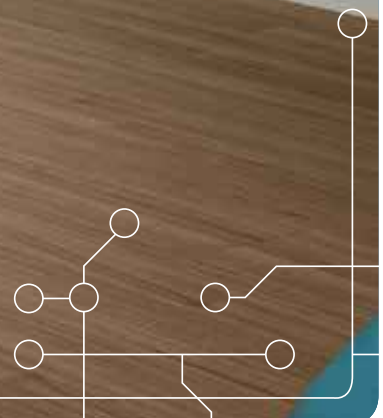


Facilities

- Foyer with reception desk
- Cloakroom with lockers
- Wi-Fi
- Reading table
- Digital exhibition space
- Coffee corner
- Workspaces
- Meeting rooms
- Quiet rooms
- Private telephone rooms
- Multifunctional printer
- Use of the restaurant on the first floor
- Use of a secure IP network
- Meetings and network events

Look & Feel

- Digital screens
- Visible reception desk
- Accentuated colour blue with light floor and dark wood



HSD Education Centre

The HSD Education Centre is a flexible space with numerous amenities that facilitate training and education, brainstorm sessions, meetings and presentations for both big and small groups. In this inspiring environment, also suited also for the presentation of privacy sensitive information, companies and government departments can rent meeting-, training- and education space.

Adaptability of the rooms

The rooms are bright, modern and equipped with high-quality technology including monitors and smart boards. There are rooms for both large and small groups, which can be combined to create one large space. The furniture can also be used flexibly and can be set up in a variety of ways to suit the purpose of the activity. This allows for large groups to collaborate during educational seminars, brainstorm sessions, discussions, meetings, presentations, or simply enables them to work together more effectively.

Possible set-ups rooms A, B and C:

- A+B+C = theatre set-up (65 p.) / school set-up (32 p.)
- A+B = theatre set-up (48 p.) / school set-up (24 p.)
- A of B+C = theatre set-up (32 p.) / school set-up (16 p.)
- B of C = theatre set-up (16 p.) / school set-up (8 p.)

Facilities

- 2 Rooms for groups up to 25 persons
- 2 Rooms for groups up to 8 persons
- Rooms can be combined (up to 65 persons)
- Project room for groups up to 4 persons
- 3 Conference rooms up to 8 persons
- Individual and duo-study places
- Writable and magnetic walls
- Various facilities for beamer projections
- Flexible set-ups (including theatre set-up, cabaret, carré)
- Wi-Fi
- Use control room (including camera surveillance)
- Use HSD Plaza
- Use restaurant on the first floor

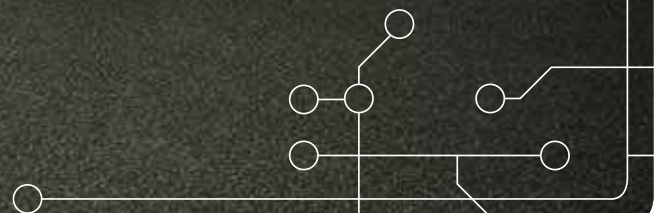
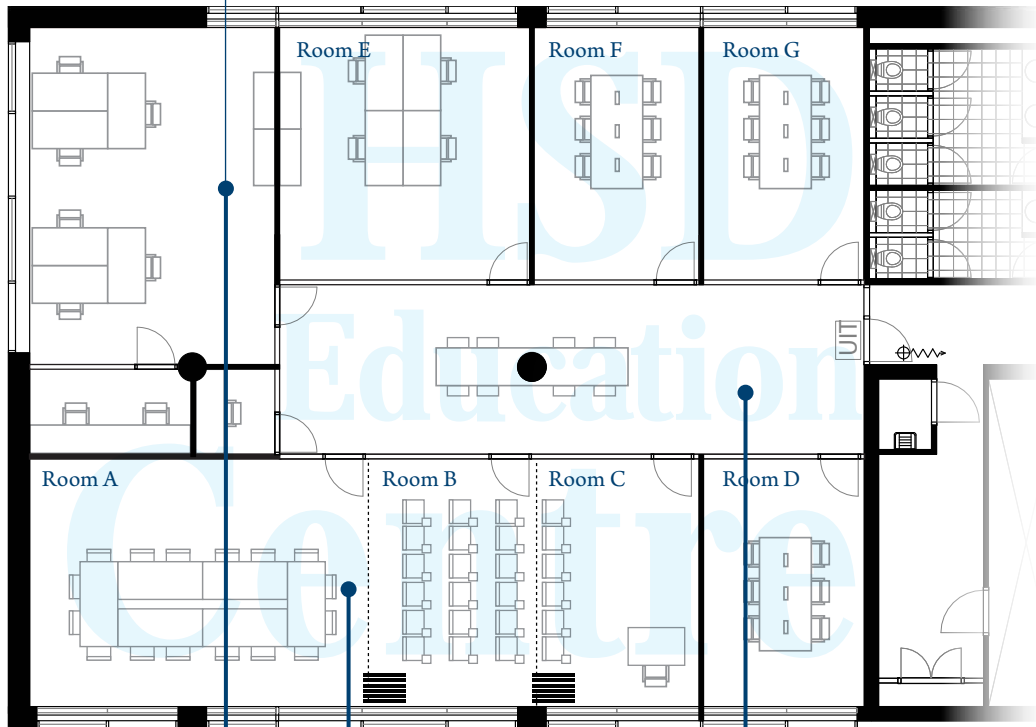




Details

Education Centre	206 m²
Room A (7,1 x 5,4 m)	38 m²
Room B/C/D/F/G (3,5 x 5,4 m)	19 m²
Room E (5,3 x 5,4 m)	29 m²

HSD Campus Management



HSD Serious Gaming Lab

In the Serious Gaming Lab professionals and (top-level) managers can gain new experiences, insights and knowledge in a familiar, lifelike and challenging environment, with individual challenges and, if desired, in a completely anonymous setting.

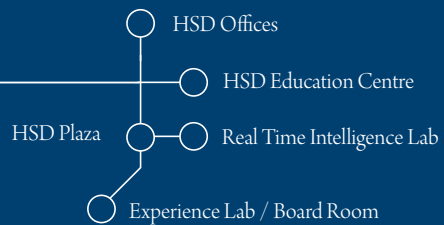
Virtual Reality

The technology available in the Serious Gaming Lab provides participants with the opportunity to develop and train new knowledge and skills for complex multi-disciplinary security and crisis management issues. Disaster and crisis situations can be imitated virtually, including the roles and responsibilities of first-responders and other stakeholders. This allows organizations and stakeholders to prepare for large events such as the Dutch Koningsdag, Bevrijdingsfeesten and sport venues, or to learn from past crisis situations such as Project X in Haren or the large fire in Moerdijk.

Control room

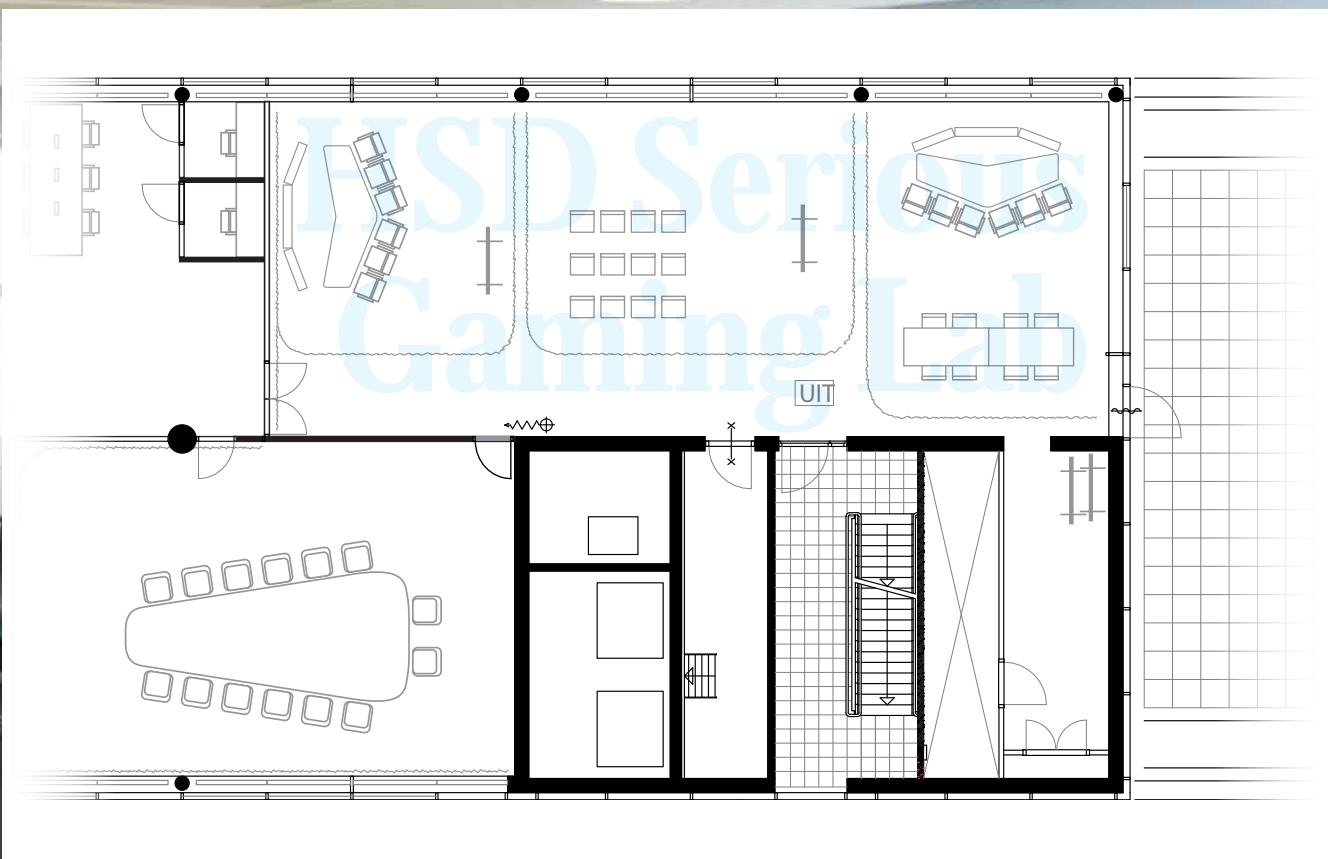
It is possible to connect the Serious Gaming Lab to the central control room in order to operate the AV-equipment or to view ongoing simulations. Only authorized personnel has exclusive access to the control room.





Details

Serious gaming Lab (18 x 7,5 m) 135 m²
Control room (3,5 x 6,5 m) 23 m²



Facilities

- Creative environment with flexible furniture
- Flexible, writable and magnetic walls
- Gaming setup with 2 x 6 workstations
- Facilities for beamer projections
- Wi-Fi
- Use of restaurant on the first floor
- Use of secure network
- Use of control room
- Use of HSD Plaza





Real Time Intelligence Lab



In the Real Time Intelligence Lab security professionals can develop new products and methods for security and crisis management issues in a virtual control room.

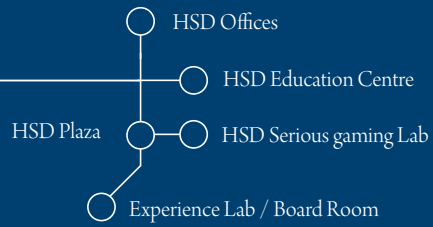
The lab provides a secure high-tech infrastructure to test and experiment newly developed methodologies, products or security services. The lab will facilitate open innovation and co-creation by governments, businesses and knowledge institutes with respect to current and future security and crisis management challenges.

Dispatch environment

This lab is designed to function as dispatch for security and first-responders, including urban security related innovations. In the future, through a live connection with regional dispatches and coordination centres, this station may serve as contingency control room during crisis situations.

Control room

It is possible to connect the Real Time Intelligence Lab to the central control room in order to operate the AV-equipment or to view ongoing simulations. Only authorized personnel has exclusive access to the control room.

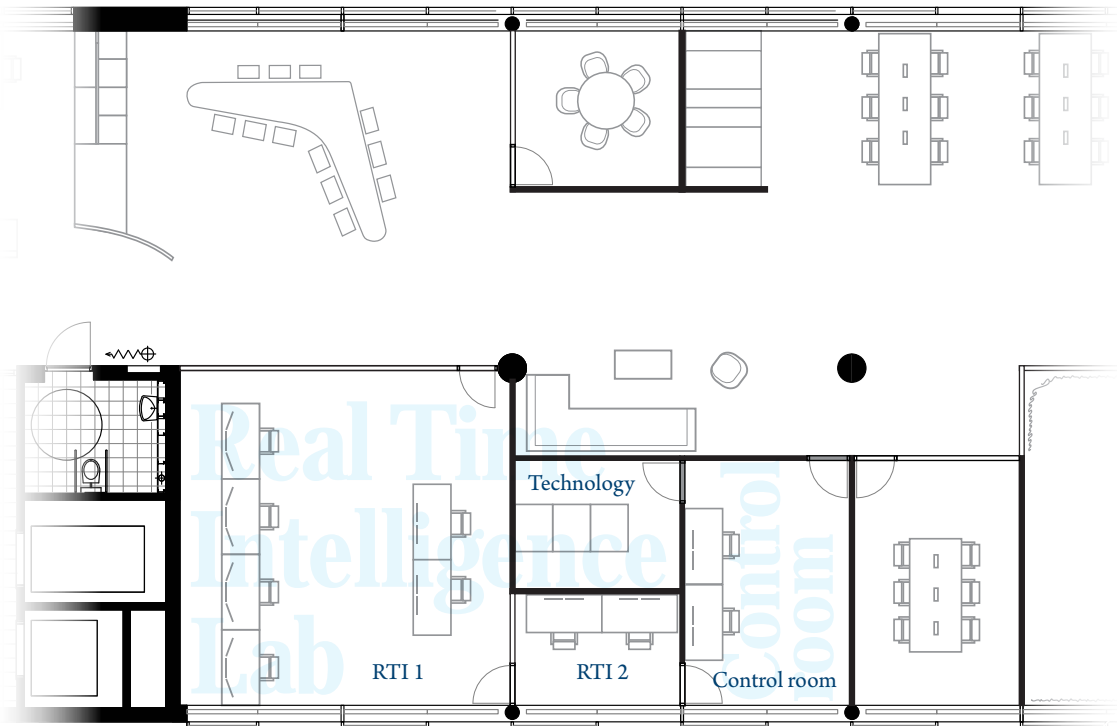


Details

Real Time Intelligence Lab	61 m²
Room RTI 1 (7 x 7,5 m)	52 m²
Room RTI 2 (3,5 x 2,7 m)	9 m²
Control room (3,5 x 6,5 m)	23 m²

Facilities

- Control room: 6 dispatch tables with a maximum of three displays and double network connections per table.
- Large projection screen
- In the future live connection with regional dispatches and coordination centres
- Wi-Fi
- Use of restaurant on the first floor
- Use of secure network
- Use of control room
- Use of HSD Plaza



Experience Lab / Boardroom

In the Experience Lab decisions makers and stakeholders alike can recreate and re-enact actual (cyber) incidents for evaluation. Here, participants are confronted with real-life cases, related data and consequences of incidents. The goal is to gain experience and learn from actual threats and incidents in order to be able to take appropriate preventive measures to reduce security risks in the future.

Privacy

Given the complex nature of many security problems it is important that participants can depend on a confidential and secure environment. The ICT-infrastructure lives up to high security standards and the room itself can be darkened, guaranteeing the privacy of a presentation in this room.

Boardroom

This room is also very suitable for use as a Boardroom. The room has a beautiful conference table that can be used both in a 'meeting' set-up and 'cinema' set-up. The room is furnished with comfortable chairs, laptop connections, all necessary AV-equipment and video screens mounted on the walls.

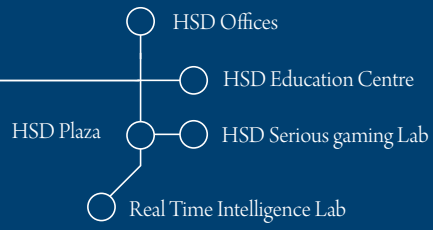
Control room

It is possible to connect the Experience Lab or the Boardroom to the central control room in order to operate the AV-equipment. Only authorized personnel has exclusive access to the control room.

Facilities

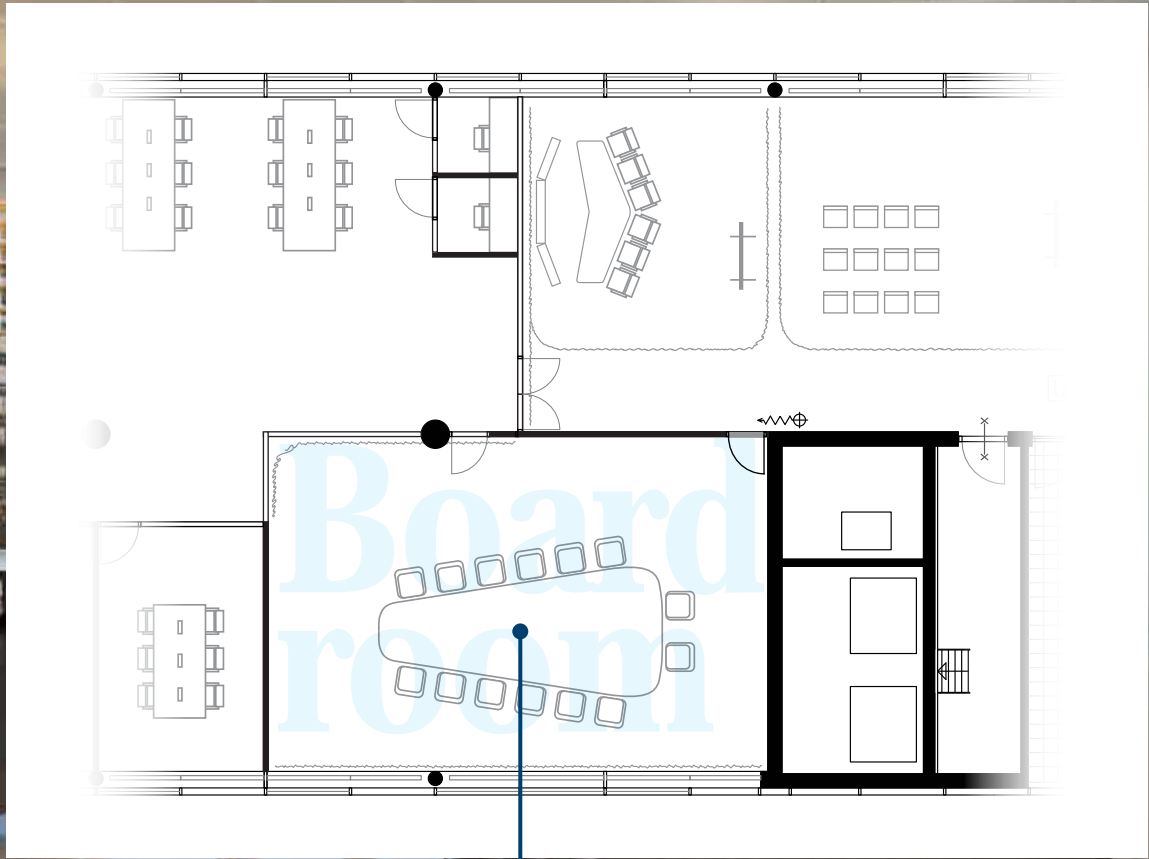
- Boardroom
- Large conference table with comfortable chairs and laptop connections for 16 people
- Business environment with different beamer projection options
- Wi-Fi
- Use of restaurant on the first floor
- Use of control room
- Use of HSD Plaza





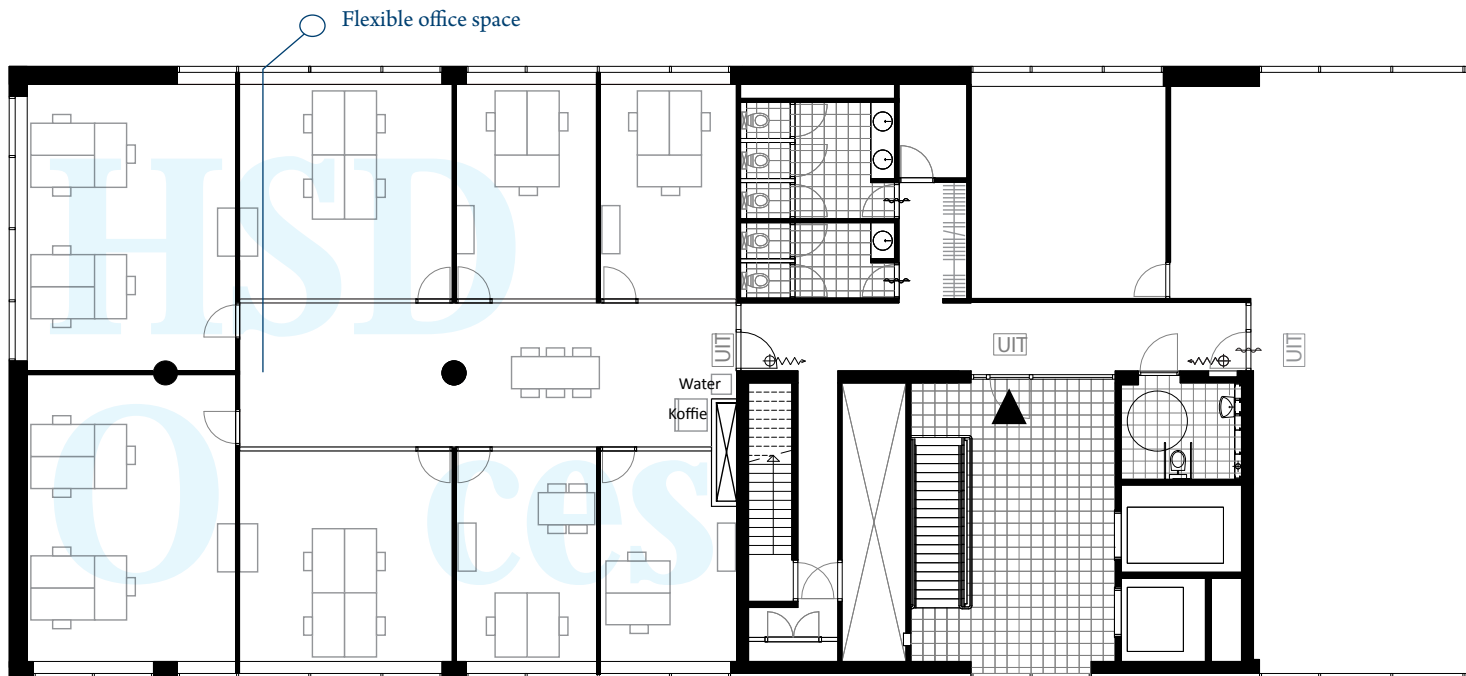
Details

Experience Lab /	
Boardroom (10,5 x 7,5 m)	79 m²
Control room (3,5 x 6,5 m)	23 m²



HSD Offices

schenkszijde

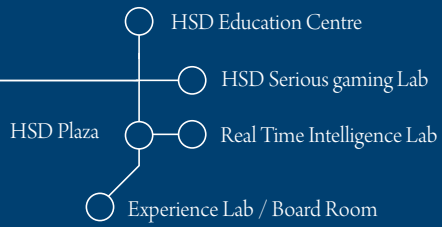


The HSD Campus offers fully equipped work spaces to project groups of the HSD Innovation houses and smaller companies in the security cluster. These work spaces can be rented for short or long term periods.

The opportunity also exists to rent individual office space on the 8th floor (left side) or on one of the other floors of the building. These are close to and at the same time independent from the HSD Campus.

The use of facilities on the HSD Campus

Tenants have access to the company restaurant and the parking garage under and adjacent to the building. They may also use the facilities of the HSD Campus, including the HSD Plaza and the ICT-infrastructure.



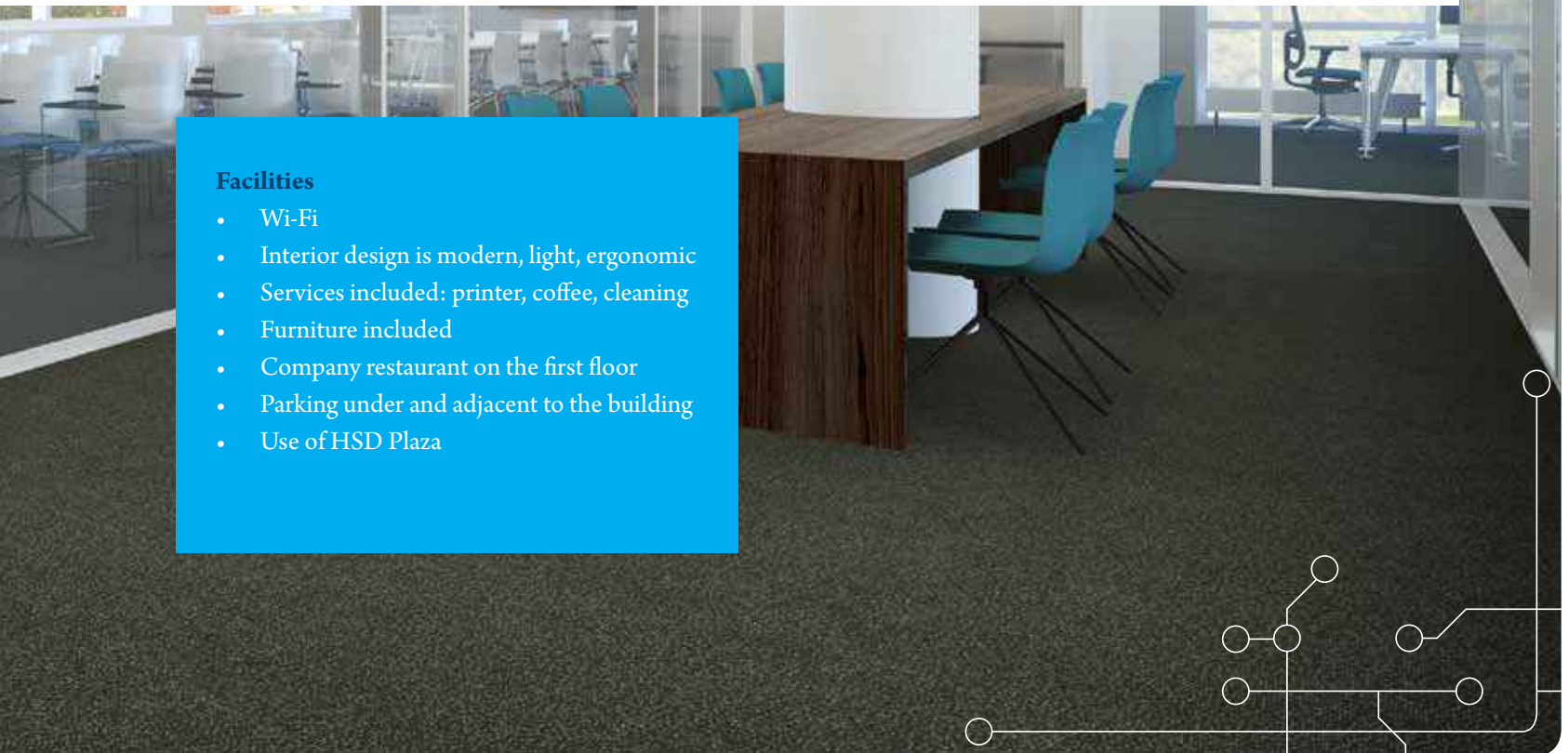
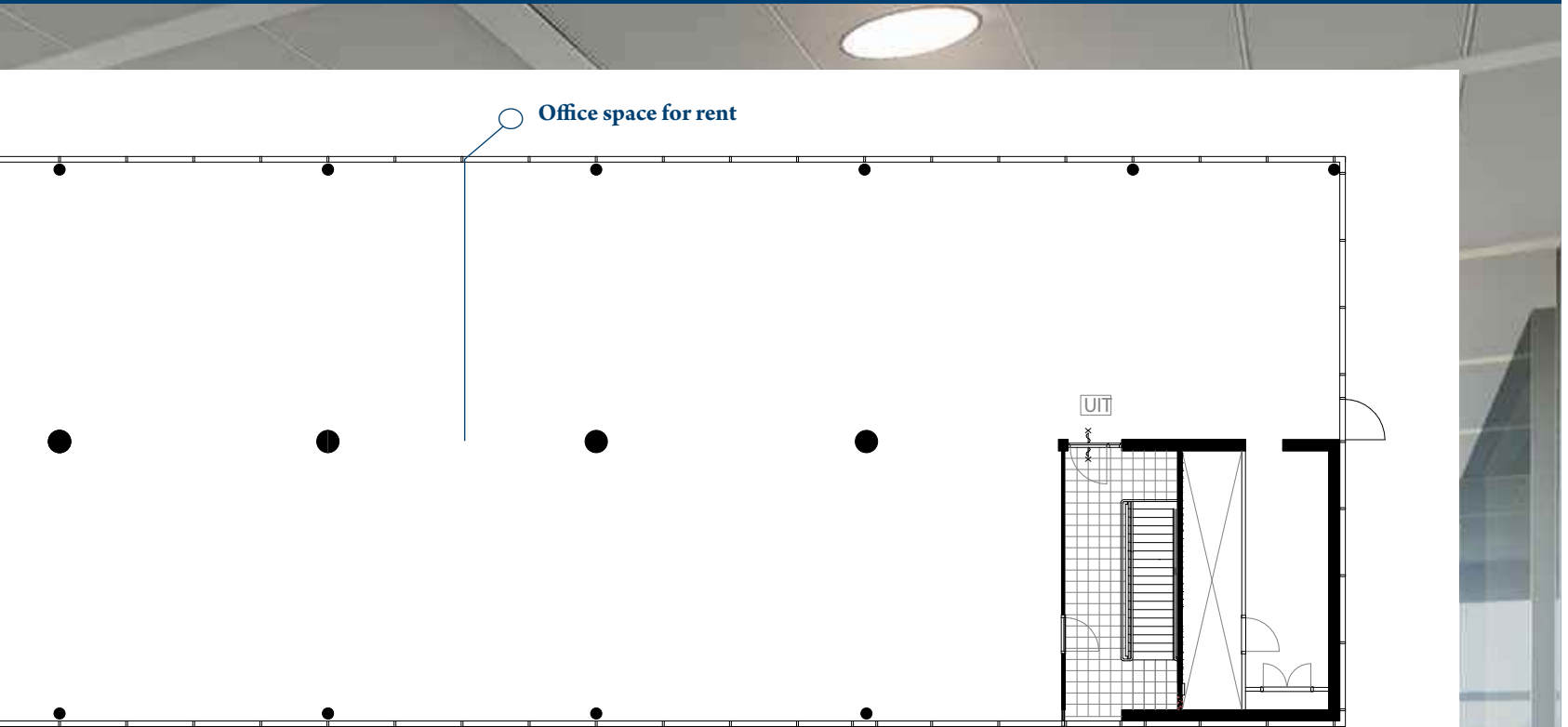
Details

Flexible office space

206 m²

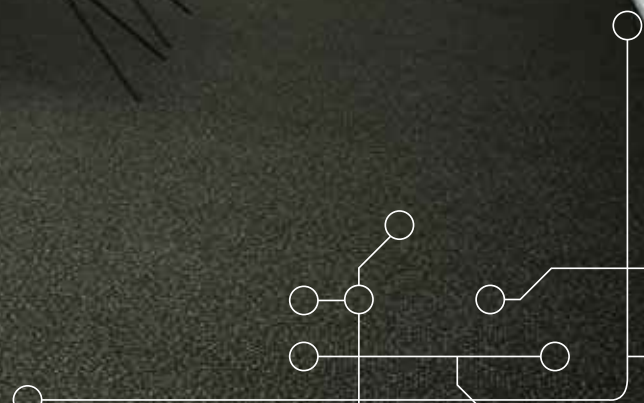
Office space in HSD Plaza

97 m²



Facilities

- Wi-Fi
- Interior design is modern, light, ergonomic
- Services included: printer, coffee, cleaning
- Furniture included
- Company restaurant on the first floor
- Parking under and adjacent to the building
- Use of HSD Plaza



Route

Train or RandstadRail:

Both the train and the RandstadRail connect at The Hague Laan van NOI station. The RandstadRail includes lines 3 and 4 that connect The Hague with Zoetermeer, and the Erasmus line that connects The Hague with Rotterdam.

When you arrive at The Hague Laan van NOI station walk towards the Ministry of SZW. At the exit, turn left immediately and follow the path for 200 meters until you arrive at the Wilhelmina van Pruisenweg. You can find the HSD Campus in the first silver colored building on your left hand.



Bus or Tram:

Tram 2, buslijn 5 and 23
(stop station Laan van Nieuw Oost-Indië),
Tram 6 (stop Oostinje),
Bus 28 (stop Stuyvesantstraat),
Bus 45, 380, 382, 383 (stop Haagse Poort).

By car:

From Rotterdam: A13, A4, A12.
From Amsterdam: A4, A12 of A44.
From Utrecht: A12.

Upon arrival in the Hague from the A12 (Utrechtsebaan) take exit 3 Bezuidenhout-Mariahoeve. At the traffic light turn right. At the next traffic light continue straight ahead. At the next traffic lights, turn right onto the Wilhelmina van Pruisenweg. At the end, before the sharp turn to the left, you will see the entrance of the HSD Campus on your right.

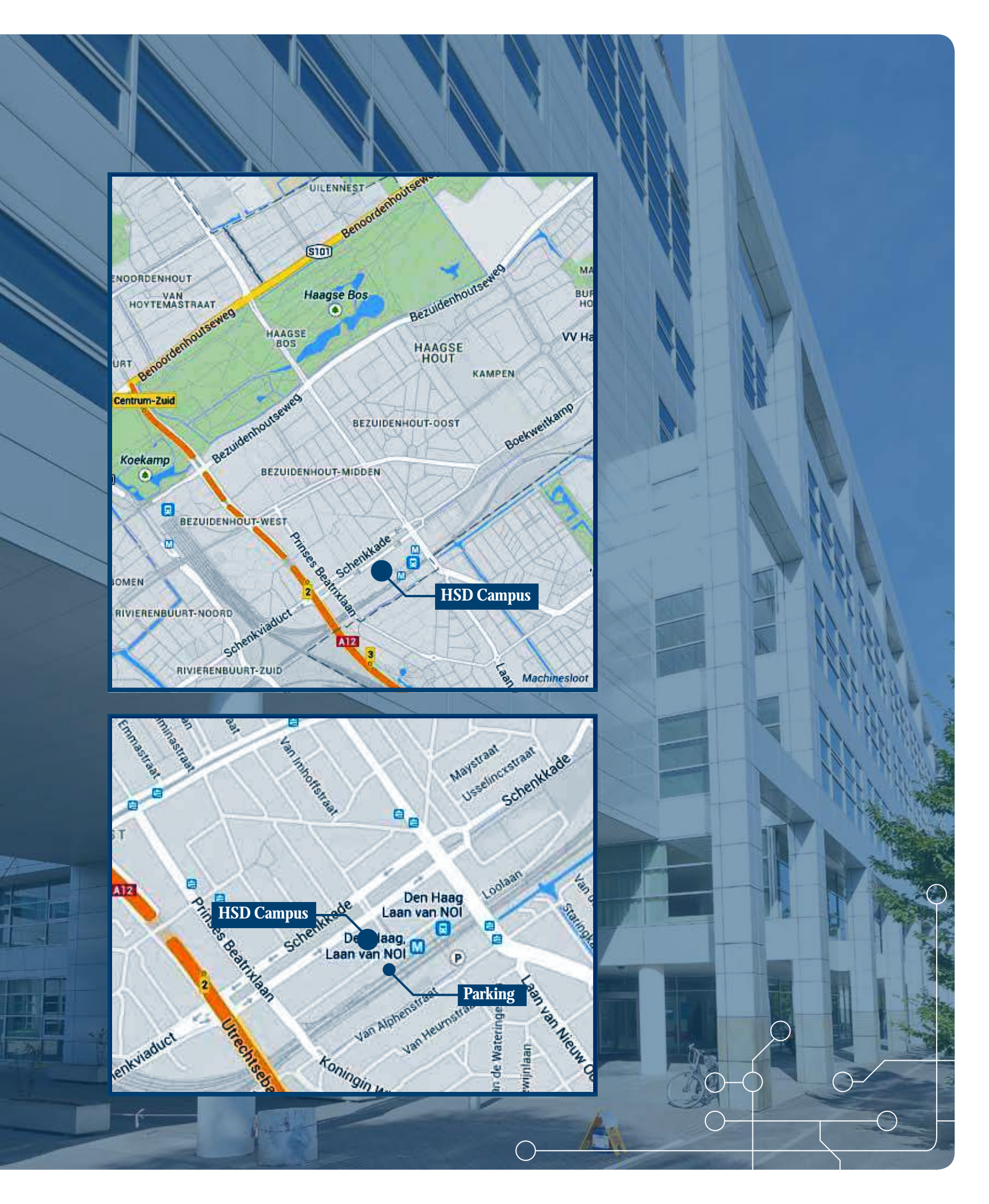
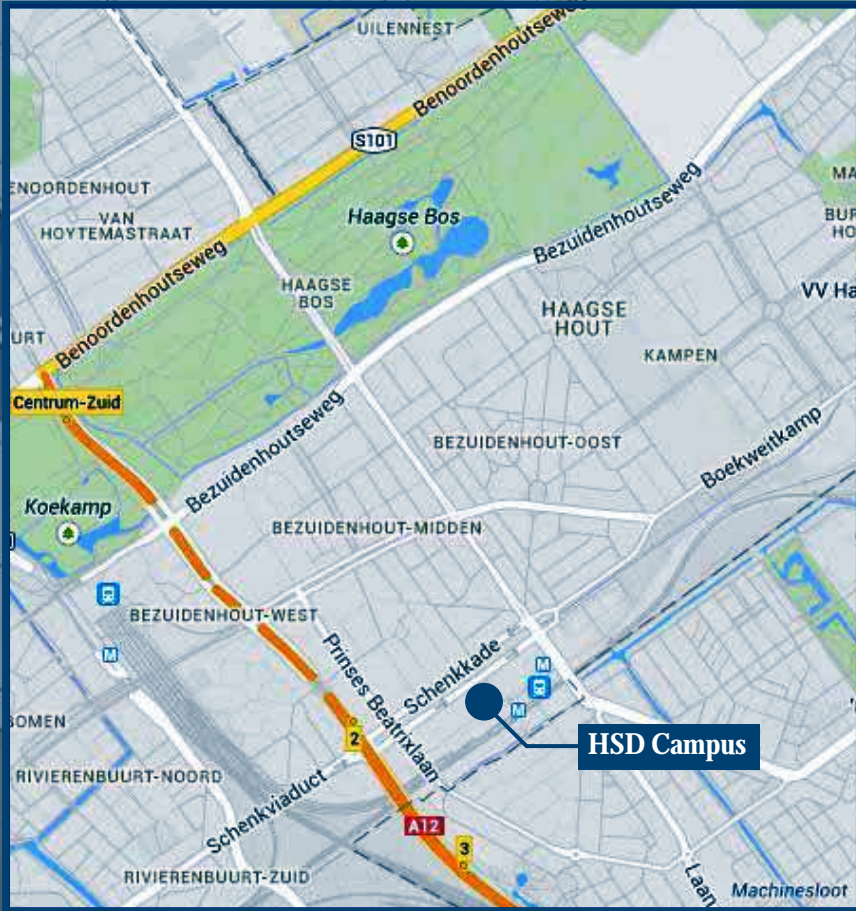
From Amsterdam/Leiden, via de A44/N44: Follow the signs to the Hague (Den Haag). In the Hague (Willem Witsenplein) turn left in the direction of Voorburg-Leidschendam. At Laan van Nieuw Oost-Indie at the traffic lights, before passing the railway-bridge and the gas station BP, turn right on Schenkkade. At the next traffic light left, and short thereafter at the next traffic lights go straight ahead (Wilhelmina van Pruisenweg). At the end, before the sharp turn to the left, you will find the entrance to the HSD Campus on your right.

Parking

The entrance of the underground parking garage is located on the Wilhelmina van Pruisenweg, right across the entrance of the HSD Campus.

**HSD Campus
Wilhelmina van Pruisenweg 104
(7th and 8th Floor)
2595 AN, the Hague**





For You?

Rental options and other information

Interested in using the facilities at the HSD Campus?
Please contact: Mr. Erik van der Rijt, City of The Hague.
Telephone: +31 70 353 7790.
Email: erik.vanderrijt@denhaag.nl.

The Hague Security Delta

If you would like to stay informed about the Hague Security Delta and the HSD Campus, please subscribe for the newsletter of The Hague Security Delta through info@thehaguesecuritydelta.com or via the website www.thehaguesecuritydelta.com.

The HSD Campus is made possible by:



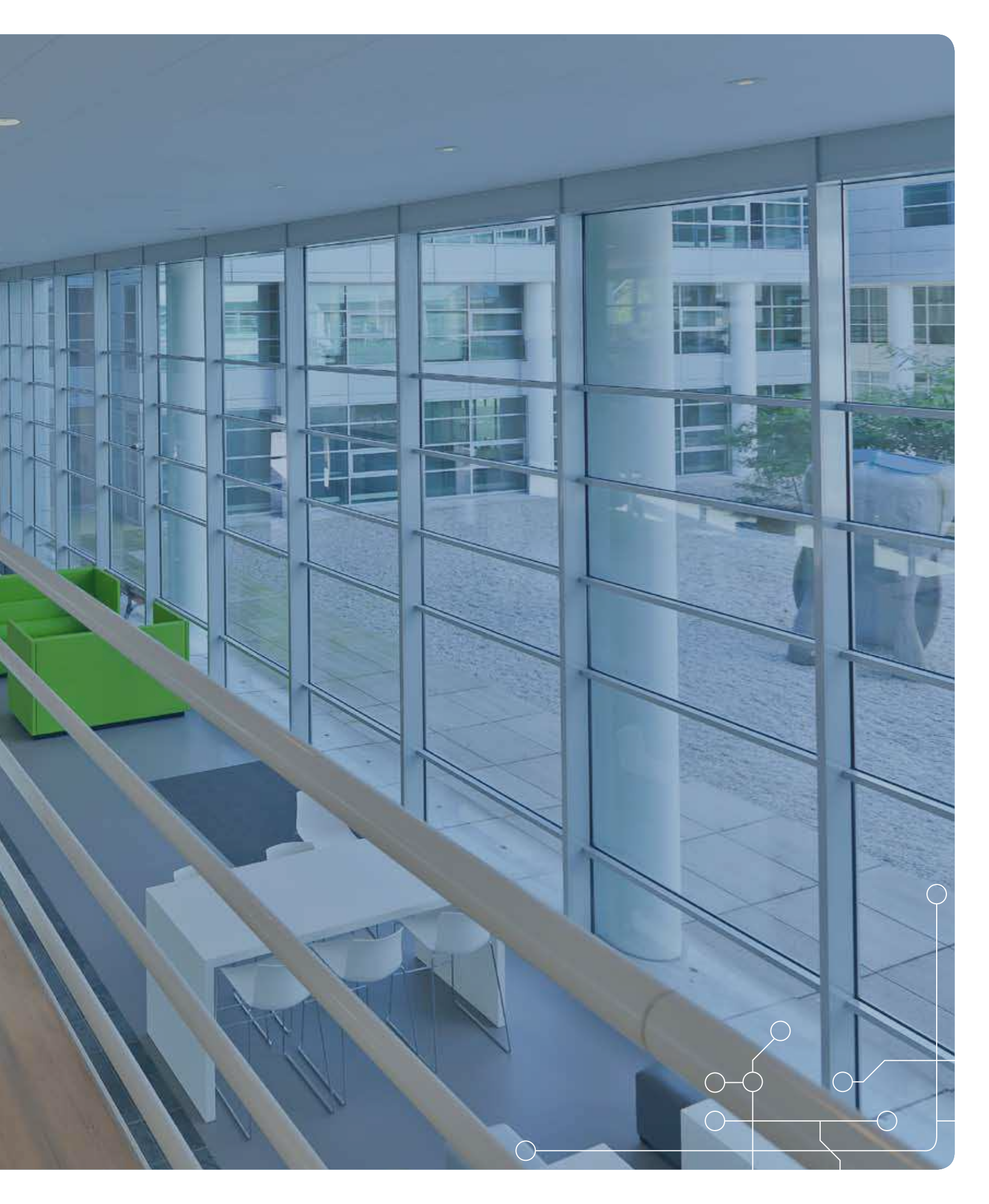
**Kansen
VOOR West**
G4P4



Investing in your future. This project is made available by the European Regional Development Fund (ERDF) of the European Union.

Disclaimer

This brochure is for general information purposes only. We make no representations or warranties of any kind, express or implied, about the completeness, accuracy, reliability or suitability with respect to the information, products, services, or related graphics contained in this brochure for any purpose. In no event will we be liable for any loss or damage arising from the use of this brochure.



HSD Campus

- Innovation center for the Dutch security cluster
- Beatrixpark in The Hague, easily accessible by public transport and highways
- Living labs for serious gaming, cyber and real-time intelligence
- Flexible working spaces and (temporary) offices
- Training facilities for big and small groups
- Boardroom, several meeting rooms and quiet rooms
- Coffee corner and Wi-Fi
- Modern foyer for meetings

The grand opening of the HSD Campus is scheduled for February 13th, 2014.

